

skram

skramfurniture.com



piedmont #1 stool-counter/bar

PSI-2 / PSI-3



The piedmont no. 1 stool features solid timber construction and a reinforced heavyweight leather sling seat. This product is offered in 3 standard heights for dining, counter, and bar applications. Model PSI-1 has a bridle joint stretcher at floor level. Models PSI-2 (counter) and PSI-3 (bar) have a metal footrest. Clients may specify timber, sling seat, and footrest materials/finishes from the options below. Custom options are available. Residential or contract use.

skram

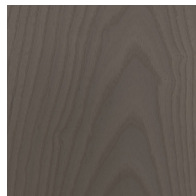
PSI-2 width 16 / 41cm depth 15 / 38cm height 25 / 64cm

PSI-3 width 16 / 41cm depth 15 / 38cm height 31 / 79cm

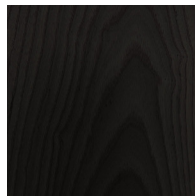
Timber



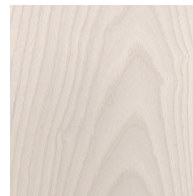
WA-N: White
Ash, Natural



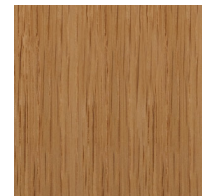
WA-G: White
Ash, Grey



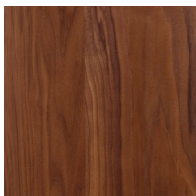
WA-E: White
Ash, Ebonized



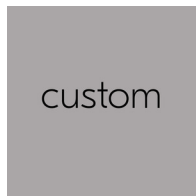
WA-WW: White
Ash,
Whitewashed



RWO-N: Rift
White Oak,
Natural



WAL: Walnut,
Natural



custom

custom

skram

Metal

Natural



SS4: Brushed
Stainless Steel



GML: Gunmetal



DRB: Dark
Rubbed Bronze



NRB: Natural
Rubbed Bronze

Matte Opaques



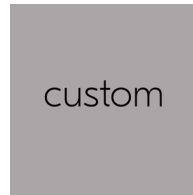
MOB: Matte
Opaque Black



MOC: Matte
Opaque
Charcoal



MOW: Matte
Opaque White



custom

Leather

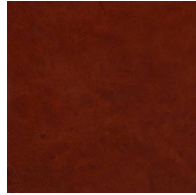
skram

Leather

Character: Heavyweight



CL-TN-H: Tan



CL-CNT-H:
Chestnut

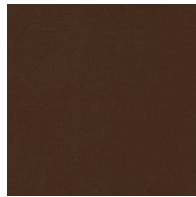


CL-BLK-H: Black

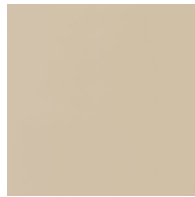
Architectural



AL-WBG: Warm
Beige



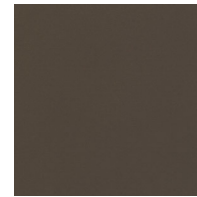
AL BRN: Brown



AL-CRM: Cream



AL-MEDG:
Medium Grey



AL-SMK: Smoke

COM - COL



com-col