

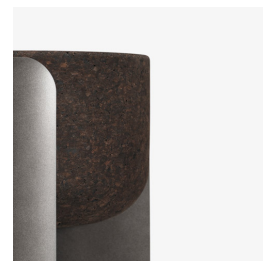
skram

skramfurniture.com



bolota capture

BCI



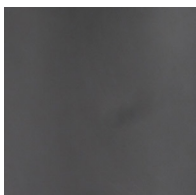
BOLOTA is a limited series of seating and tables featuring high-density black cork. Bolota Capture use high-density black cork with blackened aluminum surrounds and satin bronze tension pins. Capture may be used as stools or side tables in residential or premium contract applications.

skram

BCI diameter 12.5 / 32

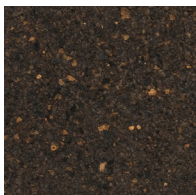
height 18.5 / 47

Metal



BAL: Blackened
Aluminum

Other Materials



CK-BK: Cork,
Black