

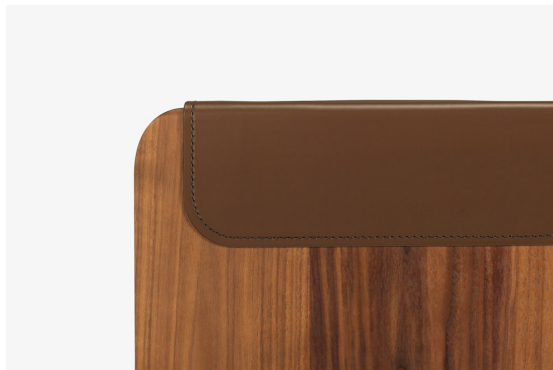
# skram

skramfurniture.com



## piedmont #1 stool-counter/bar

PSI-2 / PSI-3



The piedmont no. 1 stool features solid timber construction and a reinforced heavyweight leather sling seat. This product is offered in 3 standard heights for dining, counter, and bar applications. Model PSI-1 has a bridle joint stretcher at floor level. Models PSI-2 (counter) and PSI-3 (bar) have a metal footrest. Clients may specify timber, sling seat, and footrest materials/finishes from the options below. Custom options are available. Residential or contract use.

# skram

---

**PSI-2**    width 16 / 41cm    depth 15 / 38cm    height 25 / 64cm

---

**PSI-3**    width 16 / 41cm    depth 15 / 38cm    height 31 / 79cm

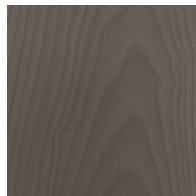
---

## Timber

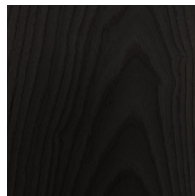
---



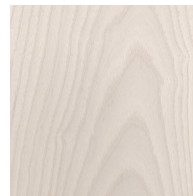
WA-N: White  
Ash, Natural



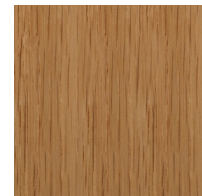
WA-G: White  
Ash, Grey



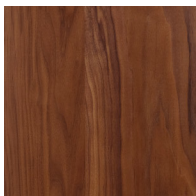
WA-E: White  
Ash, Ebonized



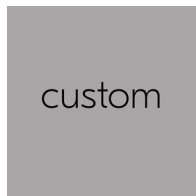
WA-WW: White  
Ash,  
Whitewashed



RWO-N: Rift  
White Oak,  
Natural



WAL: Walnut,  
Natural



custom

# skram

---

## Metal

---

### Natural



SS4: Brushed  
Stainless Steel



GML: Gunmetal



DRB: Dark  
Rubbed Bronze



NRB: Natural  
Rubbed Bronze

### Matte Opaques



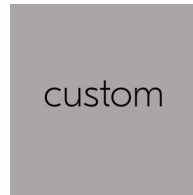
MOB: Matte  
Opaque Black



MOC: Matte  
Opaque  
Charcoal



MOW: Matte  
Opaque White



custom

---

## Leather

---

# skram

---

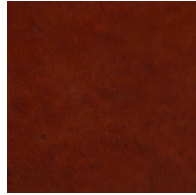
## Leather

---

Character: Heavyweight



CL-TN-H: Tan



CL-CNT-H:  
Chestnut

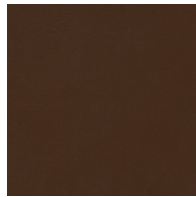


CL-BLK-H: Black

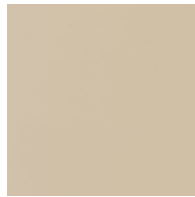
Architectural



AL-WBG: Warm  
Beige



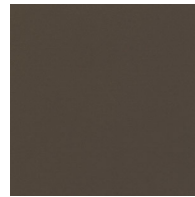
AL BRN: Brown



AL-CRM: Cream



AL-MEDG:  
Medium Grey



AL-SMK: Smoke

COM - COL



com-col