

skram

skramfurniture.com



piedmont #2 stool-dining

PS2-1



The piedmont no. 2 stool is a backless stool in steel and timber with a reinforced heavyweight leather sling seat. This product is offered in 3 standard heights for dining, counter, and bar applications. Clients may specify timber, sling seat, and metal materials/finishes from the options below. Custom options are available. Residential or contract use. Please contact skram for details regarding contract modified version of this product.

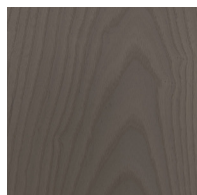
skram

PS2-1 width 17 / 43cm depth 15 / 38cm height 18 / 46cm

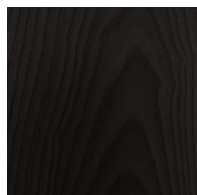
Timber



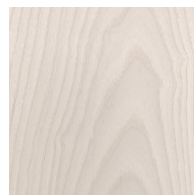
WA-N: White
Ash, Natural



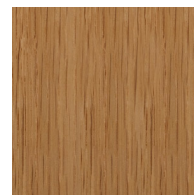
WA-G: White
Ash, Grey



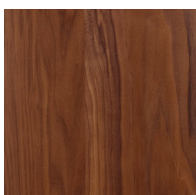
WA-E: White
Ash, Ebonized



WA-WW: White
Ash,
Whitewashed



RWO-N: Rift
White Oak,
Natural



WAL: Walnut,
Natural

Metal

Natural



GML: Gunmetal

skram

Metal

Matte Opaques



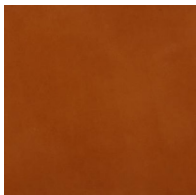
MOB: Matte
Opaque Black



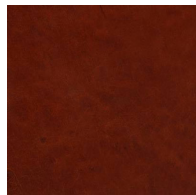
custom

Leather

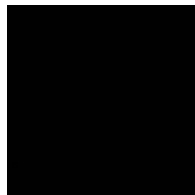
Character: Heavyweight



CL-TN-H: Tan

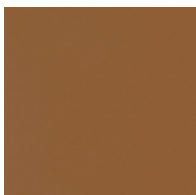


CL-CNT-H:
Chestnut

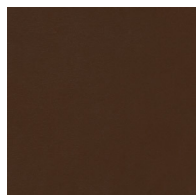


CL-BLK-H: Black

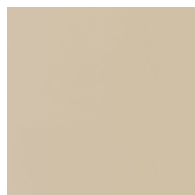
Architectural



AL-WBG: Warm
Beige



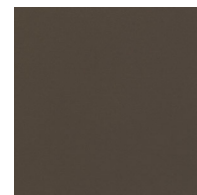
AL BRN: Brown



AL-CRM: Cream



AL-MEDG:
Medium Grey



AL-SMK: Smoke

skram

Leather

COM - COL



com-col