

skram

skramfurniture.com



lineground side table/nightstand #3

L08



The lineground no. 3 side table features solid timber construction, mortise-and-tenon joinery, and mitered corners with matched seams/waterfall edges. Drawers are maple with cork-lined bottoms with soft-closing concealed runners and low profile tab style drawer pulls. Skram timber and veneer options are available on this product, as well as options for contrasting drawer face materials such as leather, opaque color, or bespoke options. Custom sizes, configurations, and materials are available. Residential or contract use.

skram

L08 width 34 / 86cm depth 18 / 46cm height 22 / 56cm

Timber



WA-N: White
Ash, Natural



WA-G: White
Ash, Grey



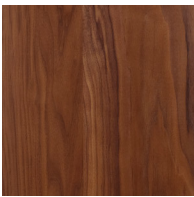
WA-E: White
Ash, Ebonized



WA-WW: White
Ash,
Whitewashed



RWO-N: Rift
White Oak,
Natural



WAL: Walnut,
Natural



matte
opaque

matte opaque



custom

custom

Metal

Natural



SS4: Brushed
Stainless Steel



GML: Gunmetal



DRB: Dark
Rubbed Bronze



NRB: Natural
Rubbed Bronze

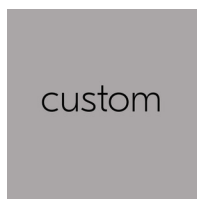
skram

Metal

Matte Opaques

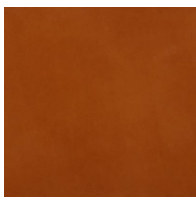


MOB: Matte
Opaque Black

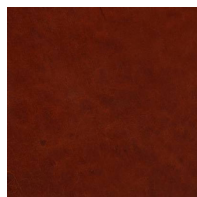


custom

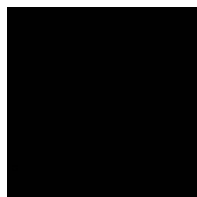
Leather



CL-TN-H: Tan



CL-CNT-H:
Chestnut



CL-BLK-H: Black